



NCS Colour Centre SA cc
P.O.Box 1038
Robertson
Western Cape
6705, South Africa

m : 082 900 7909
t : 011 486 3190
f : 086 428 2468
info@ncscolour.co.za
www.ncscolour.co.za

NCS COLOUR COURSE – DAY ONE

Use of colour in International Architecture

The NCS Colour Centre presents a workshop for professional colour users and communicators enabling them to use colour more efficiently and have a better understanding of how colour works.

The course aims at giving a basic knowledge about colour as visual phenomena. A thorough explanation of the Natural Colour System theoretically together with a series of exercises will be covered. Colour usage and design in South Africa will also be discussed. Certificate of completion is awarded to each student.

The South African Institute of Architects has assessed and validated this Category one CPD Activity. The activity carries 2 CPD credits.



Price per student is R3600.00 including VAT

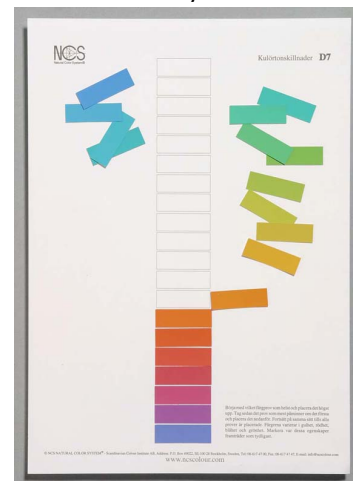
Course times are 8am to 4.30pm

INTRODUCTION TO COLOUR

D7 HUE DIFFERENCE

Trains the ability to observe and analyze small differences in colour hue and leads to the discovery of the four elementary attributes of yellowness, redness, blueness and greenness.

20 colour samples of format 12 x 37 mm (exercises)





D8 NUANCE DIFFERENCE

Trains the ability to observe and analyze small differences in nuance and leads to the discovery of the elementary attributes of whiteness, blackness and chromaticness. D8 can be obtained in red or green. 17 colour samples of format 12 x 37 mm (exercise) and 30 x 65 mm (demonstration).

E1 ELEMENTARY COLOURS & ATTRIBUTES

Shows the six elementary colours and a number of colours close to each of these. Trains the ability to estimate the main and subsidiary attributes.

32 colour samples of format 23 x 23 mm (exercise)



D4 COLOUR CIRCLE

Trains the ability to estimate the hues of colours and arrange the samples in a colour circle. The exercise includes samples in three characteristic nuance groups where the chromaticness, whiteness and blackness dominate.

48 colour samples of format 23 x 23 mm (exercise)

E2 COLOUR TRIANGLE

Trains the ability to estimate the nuance of colours, i.e. their whiteness, blackness and chromaticness and arrange them in a colour triangle. E2 can be obtained in yellow, red, blue or green.

24 colour samples of format 23 x 23 mm (exercise)

E3 COLOUR AREAS





An excellent summarizing revision of the colour system with training in the estimation of both hue and nuance of a large number of samples. The 56 colour samples from the whole colour world represent the characteristic colour regions obtained if the colour circle is divided into 8 hue regions and the colour triangle into 7 nuance areas. 56 colour samples of format 23 x 23 mm (exercise)

NCS 1-4 TRAINING IN COLOUR ANALYSIS

An exercise in NCS colour notations. The exercise teaches how to understand the relationship between what a colour looks like and how it can be described in the colour circle and colour triangle and how it is given an NCS-notation.

4 x 4 colour samples of format 26 x 38 mm (exercise).

PRACTICAL EXERCISES

Randomly collected samples (not of paint origin) analysed according to the NCS system using the above exercises. Look at a colour and analyse the sample to its component parts

Each student will receive a Colour Wheel, a Colour Triangle as well as a Colour Mask. The students will receive a folder with the exercises for reference purposes. Notes are also sent after the course

If you would like to attend our workshop, we do require payment upfront in order to secure your spot. Our banking details for payments are as follows – please use name and invoice number as a reference:

NCS Colour Centre SA

First National Bank

Melville 256505,

Account number 62015124712

